

# G A S K E T P R O F I L E S

## PROFILE 2076

Custom manufactured to desired size Part# A1.0028  
PVC Magnetic Door Gasket. Uses magnet series 0080.  
Used on Delfeld commercial refrigeration and freezer units.  
Use 2250 as an alternative.

## PROFILE 10095

Custom manufactured to desired size Part# A1.0010  
PVC Magnetic Door Gasket. Uses magnet series 0080.  
Used on Continental, Duke, Leer, Nor-Lake, Progressive, Tyler, Utility, Victory commercial refrigeration and freezer units.

## PROFILE 2250

Custom manufactured to desired size Part# A1.0015  
PVC Magnetic Door Gasket. Uses magnet series 6120.  
The most "universal" gasket. With a little ingenuity it can be put on almost anything that is in very bad condition that the original profile will not work. Old walk-ins, Delfield, Randell and other commercial refrigeration units. Its wide magnet holds well under a variety of situations.

## PROFILE 2208

Custom manufactured to desired size Part# A1.0006  
PVC Magnetic Door Gasket. Uses magnet series 6120.  
Carter-Hoffman, Federal Stanley-Knight, Traulsen commercial refrigeration and freezer units.  
Low profile magnetic screw-in gasket. Used on doors with narrow offset. If the door is not perfectly straight and there is space, use 2250 as an alternative.

## PROFILE 2211

Custom manufactured to desired size Part# A1.0005  
PVC Magnetic Door Gasket. Uses magnet series 6120.  
Hobart, Koch, Utility, Vulcan commercial refrigeration and freezer units.  
This panel mounted gasket has some stretch and should be made a little small for a snug fit.

## PROFILE 2396

Custom manufactured to desired size Part# A1.0024  
PVC Compression Door Gasket.  
Very common used on many varieties of OEM and custom equipment.

## PROFILE 82

Custom manufactured to desired size Part# A1.0025  
PVC Compression Door Gasket.  
Hobart, Beverage Air commercial refrigeration and freezer units.  
Same as above, but slightly thicker. Be careful not to use this on an old door that is close on the hinge side. It is hard to compress and requires a lot of heat.

# G A S K E T P R O F I L E S



## PROFILE 2328

Custom manufactured to desired size Part# A1.0033

PVC Press in Door Gasket.

Used on Jordon, Victory commercial refrigeration and freezer units.



## PROFILE 2210

Custom manufactured to desired size Part#



## PROFILE 2079

Custom manufactured to desired size Part# A1.0030

PVC Magnetic Door Gasket. Uses magnet series 0080.

Used on Delfield commercial refrigeration and freezer units.



## PROFILE 9532

Custom manufactured to desired size Part# A1.0019 Black, Part# A1.0018 Gray

PVC Magnetic Door Gasket. Uses magnet series 0080.

Very common gasket found on all types of equipment including; Beverage Air, Continental, Delfield, Federal, Glasterder, Hobart/Koch, Hussman, Jordon, Kairak Kelvinator Kolpak, Kool-Air, Leer, Master-Bilt, McCall, Nor-Lake, Progressive, Randell, Star-starrett Thermo-Kool, Vollrath, Vulcan-Hart Replaces many dart mounted gaskets.



## PROFILE 9527

Custom manufactured to desired size Part# A1.0014

PVC Magnetic Door Gasket. Uses magnet series 6120.

Glenco, Traulsen, Beverage Air, and many other commercial refrigerator freezer units. Just like 9532 but the magnet channel runs down the middle.



## PROFILE 9555

Custom manufactured to desired size Part# A1.0017

PVC Magnetic Door Gasket. Uses magnet series 6120.

Glenco, Traulsen, Victory commercial refrigerator freezer units. Do not confuse with the 9532 this gasket is much larger and harder.



## PROFILE 9539

Custom manufactured to desired size Part# A1.0008

PVC Magnetic Door Gasket. Uses magnet series 6120.

Bally, Brown, American Panel, Howard and Schaefer commercial refrigerator freezer units.

# G A S K E T P R O F I L E S



## PROFILE 10054

Custom manufactured to desired size Part# A1.0003  
PVC Magnetic Door Gasket. Uses magnet series 3030.  
Barr, Schaefer commercial refrigerator freezer units.



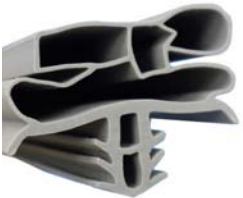
## PROFILE 9525

Custom manufactured to desired size Part# A1.0002  
PVC Magnetic Door Gasket. Uses magnet series 6120.  
Kolpak, Vollrath commercial refrigerator freezer units.



## PROFILE 2327

Custom manufactured to desired size Part# A1.0013  
PVC Magnetic Door Gasket. Uses magnet series 6120.  
Foster, Hobart commercial refrigerator freezer units.  
Can replace other press-in gaskets that have wide track.



## PROFILE 2049

Custom manufactured to desired size Part# A1.0029  
PVC Magnetic Door Gasket. Uses magnet series 6070.  
Delfield commercial refrigerator freezer units.



## PROFILE 2074

Custom manufactured to desired size Part# A1.0012  
PVC Magnetic Door Gasket. Uses magnet series 6070.  
Delfield commercial refrigerator freezer units.



## PROFILE 2257

Custom manufactured to desired size Part# A1.0016  
PVC Magnetic Door Gasket. Uses magnet series 0080.  
Randell commercial refrigerator freezer units.



## PROFILE 2213

Custom manufactured to desired size Part# A1.0009  
PVC Magnetic Door Gasket. Uses magnet series 6070.  
Traulsen commercial refrigerator freezer units.  
Original gasket is foamed in place, so installation of these gaskets  
can be difficult.

# GASKET PROFILES



## PROFILE 9541

Custom manufactured to desired size Part# A1.0004  
PVC Magnetic Door Gasket. Uses magnet series 0080.  
True Reach-In commercial refrigerator freezer units.



## PROFILE 2278

Custom manufactured to desired size Part# A1.0031  
PVC Magnetic Door Gasket. Uses magnet series 6070.  
Hussman commercial refrigerator freezer units.



## PROFILE 2262

Custom manufactured to desired size Part# A1.0007  
PVC Magnetic Door Gasket. Uses magnet series 4550.  
Anthony, Zero-Zone commercial refrigerator freezer units.  
Anthony model 101 door mounted gasket.



## PROFILE 2263W

Custom manufactured to desired size Part# A1.0001  
PVC Magnetic Door Gasket. Uses magnet series 3030.  
Anthony, McCall commercial refrigerator freezer units.



## PROFILE 2260

Custom manufactured to desired size Part# A1.0000  
PVC Magnetic Door Gasket. Uses magnet series 3030.  
Anthony, Bilo, Hussman, Kelvinator, Leer Master-Bilt, Schaefer, Tyler, Vering/Danville  
Master Bilt, Vulcan, and other commercial refrigerator freezer units.



## PROFILE 9536

Custom manufactured to desired size Part# A1.0000  
PVC Magnetic Door Gasket. Uses magnet series 3030.  
Anthony Frame mounted Gaskets for commercial refrigerator freezer units. "New" style frame  
mounted gaskets for doors manufactured after Nov. 1981. Most installations also need retainers,  
use retainer profile 2286.



## PROFILE 9169

Custom manufactured to desired size Part# A1.0032  
PVC Magnetic Door Gasket. Uses magnet series 3030.  
Anthony 400 series. For "old-style" Anthony model 400 glass  
doors. This gasket must be measured very precisely.

# G A S K E T P R O F I L E S



## PROFILE 9535

Custom manufactured to desired size Part# A1.0021

PVC Magnetic Door Gasket. Uses magnet series 3030.

Ardco, Hobart/Koch, McCall, Nor-Lake, Pinnacle commercial refrigeration and freezer units.



## PROFILE 2261

Custom manufactured to desired size Part# A1.0026

PVC Magnetic Door Gasket. Uses magnet series 4550.

Anthony Frame mounted commercial refrigeration and freezer

units. "Old" style frame mounted gaskets for doors manufactured prior to Nov. 1981, uses retainer 2310.



## PROFILE 5583

Custom manufactured to desired size Part# A1.0036

PVC Magnetic Door Gasket. Uses magnet series 0080.



## PROFILE Foam Core

Custom manufactured to desired size Part# C2.0000

1/2" Fabric Covered Foam Gasket w/ Flange



## PROFILE Foam Core

Custom manufactured to desired size Part# C2.0001

3/4" Fabric Covered Foam Gasket w/ Flange



## PROFILE Foam Core

Custom manufactured to desired size Part# C2.0002

3/8" Fabric Covered Foam Gasket w/ Flange

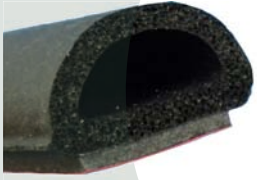


## PROFILE "D" Bulb Gasket

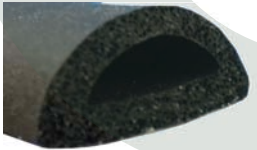
Part# C2.0005, C2.0004, C2.0003

13/16 X 1 "D" bulb gasket, 25', 50', and 100' rolls

# G A S K E T P R O F I L E S



PROFILE "D" Bulb Gasket  
Part# C2.0017  
9/16 X 3/4", "D" bulb gasket self adhesive back



PROFILE "D" Bulb Gasket  
Part# C2.0018  
3/8" X 3/4", "D" bulb gasket self adhesive back



MAGNET PROFILE 6070  
Part# C2.0000  
.375" X .125" Sold in 600' Lengths



MAGNET PROFILE 0080  
Part# C2.0001  
.312" X .150" Sold in 500' Lengths



MAGNET PROFILE 1210  
Part# C2.0002  
.312" X .094" Sold in 800' Lengths



MAGNET PROFILE 6120  
Part# C2.0003  
.5" X .125" Sold in 500' Lengths



MAGNET PROFILE 3030  
Part# C2.0004  
.375" X .096" Sold in 800' Lengths



MAGNET PROFILE 4550  
Part# C2.0005  
.375" X .103" Sold in 700' Lengths